

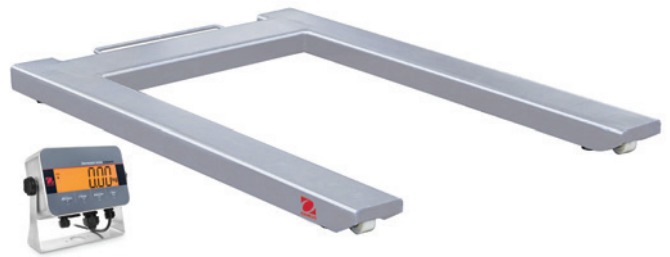


# DEFENDER™ 3000

U-Frame Pallet Scales



Painted carbon steel model shown with i-DT33P indicator



Stainless steel model shown with i-DT33XW indicator

## *Pallet Scales for Basic Industrial Applications*

The Defender 3000 Series U-Frame Pallet Scales are the value solution for your dry or washdown weighing needs in industrial and commercial applications. Their high-quality material and construction are designed for years of trouble-free service. Together with mobility features such as a lifting handle and front-mounted rollers, the Defender 3000 U-Frame Pallet Scales offer a unique combination of convenience, value and quality that you can depend on.

### *Unique Features:*

- Available in popular 1 500 kg capacity, painted carbon steel or 304 stainless steel models with handle and rollers for convenient lifting and relocation.
- Four OIML R60 approved IP67 alloy steel or stainless steel load cells with self-swiveling ball-in-cup design feet to best suit your weighing needs.
- Results are clearly shown on the large, bright backlit LCD display of the i-DT33 indicator. In Checkweighing mode, the display changes color (yellow/green/red) to alert users when within the target weight range.

# DEFENDER™ 3000 U-Frame Pallet Scales

## Specifications

Scale Models	i-DFP33P1500B1	i-DFP33XW1500C1
Certified Models	i-DFP33P1500B1-M	i-DFP33XW1500C1-M
Capacity x Readability	1 500 kg x 0,5 kg	
Platform Size (A x B x min H)	1,26 m x 0,84 m x 0,09 m	
Platform Material	Carbon steel, painted	Stainless steel, sand-blasted
Indicator	ABS plastic indicator	IP66 stainless steel indicator
Load Cell Model	4 x IP67 alloy steel, shear beam, OIML C3	4 x IP67 stainless steel, shear beam, OIML C3
Load Cell Capacity Emax	1 000 kg	
Load Cell Output Impedance	350 ohm ± 3,5 ohm	
Load Cell Excitation Voltage	5V ~ 15V, DC/AC	
Approx. Net Weight	53 kg	50 kg
Weighing Units	kg, lb, t (kg, t only for M models)	
Application Modes	Weighing, Parts Counting, Checkweighing and Totalization	
Displays	6-digit, 7-segment LCD display with multi-color backlight, 45 mm high digits	
Interface	RS232 included Optional USB, Ethernet	
Power	100-240 VAC / 50/60 Hz Universal Power Supply or C cell battery (Not included); Optional rechargeable battery	100-240 VAC / 50/60 Hz Universal Power Supply, hardwired or standard rechargeable battery
Junction Box	IP65, 304 stainless steel, with 5 m long cable	
Feet	2 x front edge rollers with 4 x self-swiveling ball-in-cup design with rubber bottom	
Accessories	Mounting Foot Plates, Column	

## Other Standard Features and Equipment

Side access IP65 stainless steel junction box available on second stage verified scale models, 1:3000e with OHAUS indicators, painted and stainless steel floor stands (available as accessories)

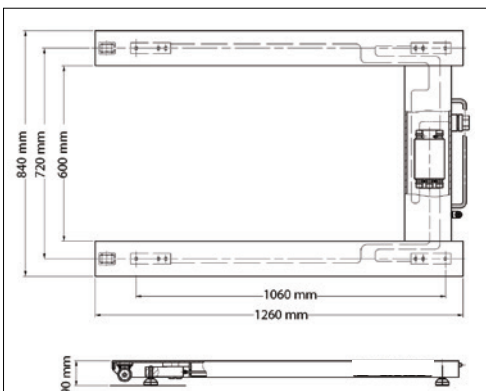
## Accessories

Ethernet Kit i-DT33 .....	30429666
USB Device Kit i-DT33 .....	30699120
Dust Cover (5) i-DT33 .....	30699121
Rechargeable Battery Kit i-DT33P .....	30699122
SF40A Printer .....	30064202
Cable RS232 i-DT33P .....	80500525
Cable RS232 i-DT33XW .....	80500552
Floor Scale Column Kit Painted .....	30531244
Floor Scale Column Kit SST.....	30539553

## Construction and Other Features



## Outline Dimensions



## Compliance

- **Metrology:** EN45501 (Scale: T12209; Indicator: TC12208; Load Cell: OIML R60/2000-NL1-12.12 / TC8012, OIML R60/2000-NL1-11.28 / TC8010, OIML R60/2000-CN1-06.05 / D09-05.19)
- **Product Safety:** IEC/EN 61010-1; CAN/CSA C22.2 61010-1; UL61010-1
- **Electromagnetic Compatibility:** IEC/EN 61326-1 Class B, basic environments; FCC Part 15 Class A; Canada ICES-003 Class A
- **Ingress Protection:** IEC 60529 – IP66 (for i-DT33XW indicator), IEC 60529 – IP67 (for Load Cell), IEC 60529 – IP65 (for Junction Box)
- **Compliance Marks:** CE, UKCA
- **Other:** WEEE, RoHS

## OHAUS Europe GmbH

Heuwinkelstrasse 3,  
8606 Nänikon,  
Switzerland

e-mail: ssc@ohaus.com  
Tel: 0041 22 567 53 19  
e-mail: tsc@ohaus.com  
Tel: 0041 22 567 53 20

[www.ohaus.com](http://www.ohaus.com)

*The management system governing the manufacture of this product is ISO 9001:2015 certified.*

