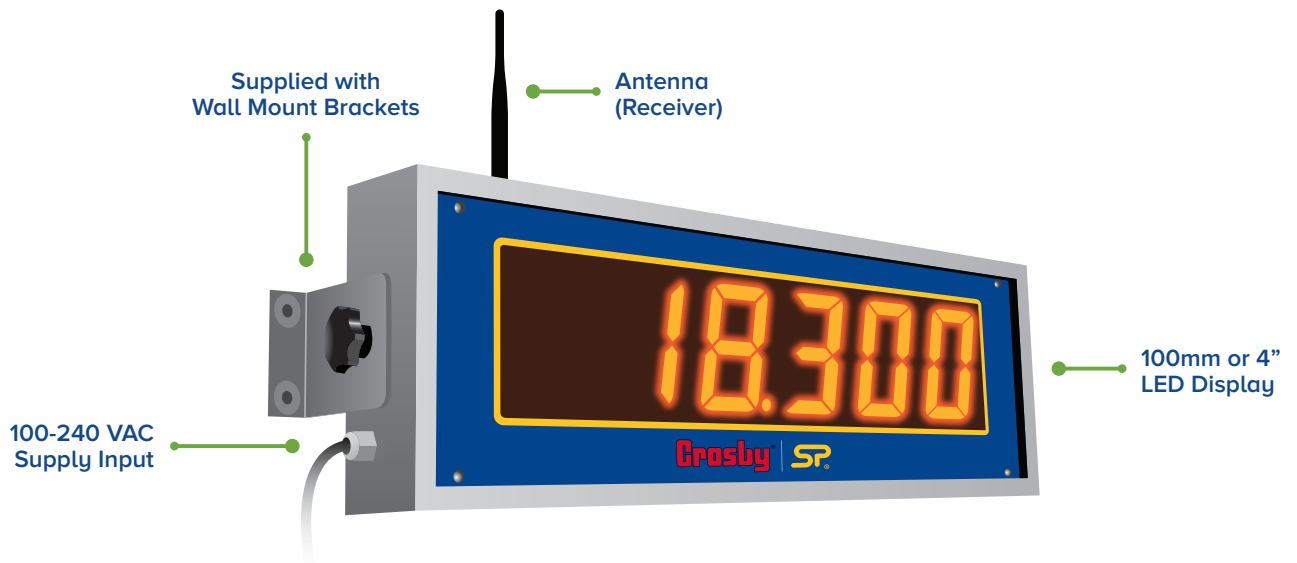


Wireless scoreboard display



This 100mm (4") scoreboard LED display is wireless, and has a range of 700m or 2300ft, and is viewable for up to 45m or 150ft.

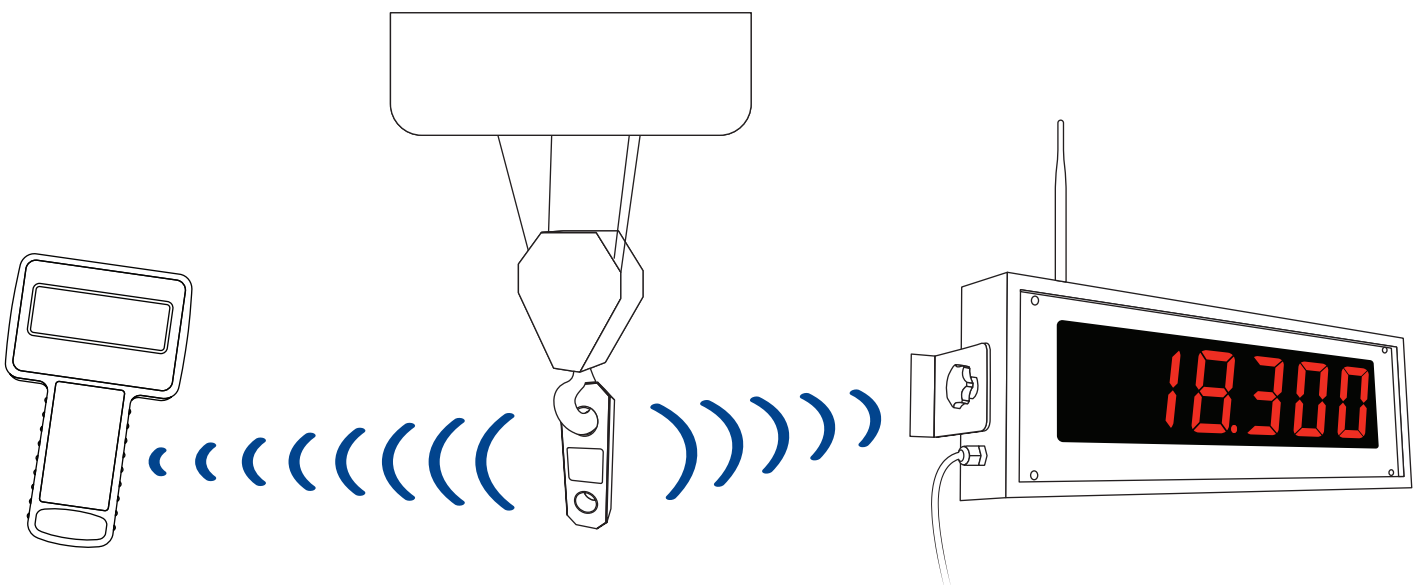
Perfect for installation on a crane gantry, the unit operates on 100-240 VAC and displays an individual load or summed load for up to four Crosby | Straightpoint wireless devices. It will also visually alert the lift operator if an overload has occurred.

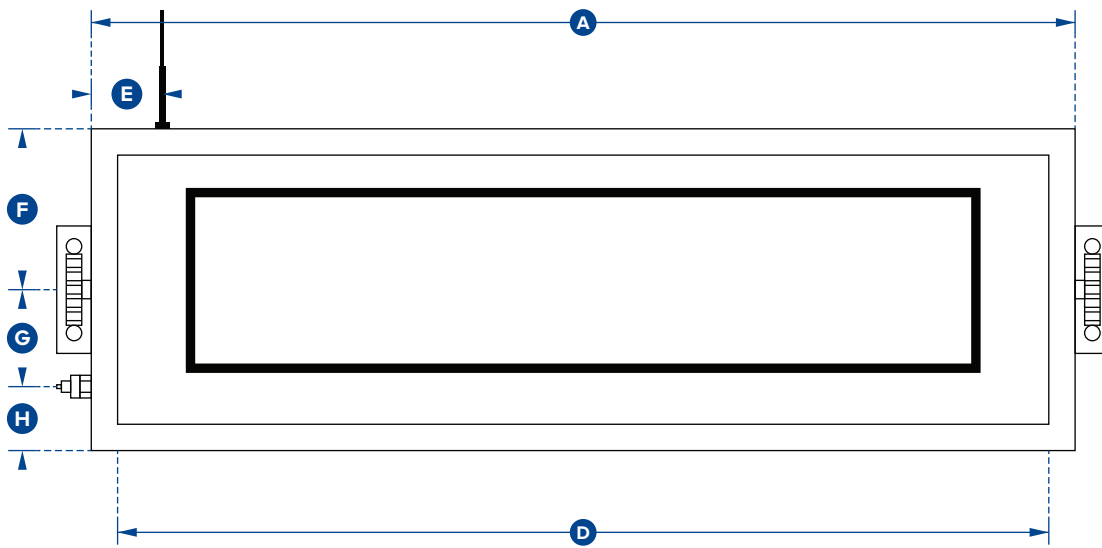
Please note: the units of the scoreboard are set to be displayed in tonnes as default. If you require it to display in different units (lbs/kg) please specify this when ordering through our sales team, so we can set the scoreboard to display your desired unit.

Features and benefits:

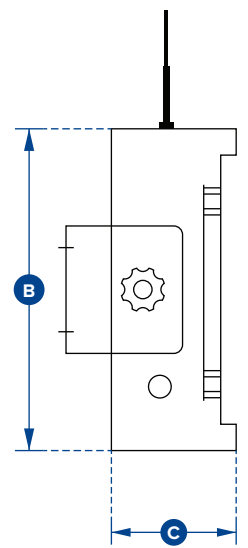
- Easy to read 100mm or 4" LED display
- Rugged steel case
- Wall mount brackets supplied
- External antennae for maximum range
- Wide range for power supply input
- Reads and displays in Tonnes

Solution





Front Elevation



Side View

| Part Numbers | |
|------------------------------|-------------------------------------|
| SP | SW-SD |
| Crosby | 2789132 |
| Required power supply | 100 - 240 VAC |
| Operational current | 0.7A |
| Radio frequency | 2.4 GHz (license free) |
| Maximum number of load cells | 4 wireless load cells (sum display) |
| Range | 700m |
| | 2300ft |
| Operating temperature range | -10°C to +50°C |
| | +14°F to +122°F |
| IP rating | IP55 |
| | NEMA 4 and 4X |
| Dimension A | 700mm |
| | 27.5" |
| Dimension B | 230mm |
| | 9" |
| Dimension C | 90mm |
| | 3.5" |
| Dimension D | 660mm |
| | 26" |
| Dimension E | 50mm |
| | 2" |
| Dimension F | 115mm |
| | 4.5" |
| Dimension G | 70mm |
| | 2.75" |
| Dimension H | 45mm |
| | 1.75" |