

KSBC2

Nickel-plated kit "KSBC" series, for shear beam SBX load cells



Assembly kit for shear beam load cells SBX series, up to 2.500kg. Suitable for weighing of hoppers, tanks, platforms, etc. **ADVANTAGES:**

- Nickel-plated construction
- Higher plate with spherical joint, for optimal weighing precision
- Anti-overturn
- Locking/bypass system for facilitated transport and maintenance
- Quick installation/removal of the load cell (even if full- loaded)

Working in cooperation with:

VETEK AB

HANTVERKSVÄGEN 15 - 76493 - VÄDDÖ - SWEDEN
Tel. +46176-208920, info@vetek.com, www.vetek.com

**The best solution
for advanced industrial
applications**

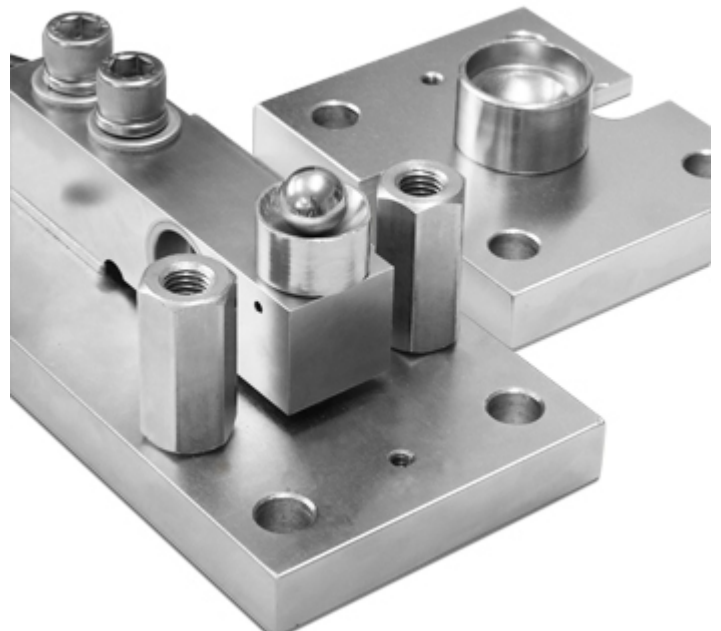
LOAD CELLS KIT: TECHNICAL FEATURES

- For shear-beam load cells, SBX series, from 300 to 2500 kg
- Nickel-plated manufacturing
- Self-centering spherical joint, for precise weighing
- Locking system for cell protection during transport or maintenance of the structure
- Limit nuts and screws, adjustable
- Anti-overturn (within the limits declared)

DETAIL 1



DETAIL 2



DETAIL 3





www.diniargeo.com



“YOUR WORLDWIDE PARTNER FOR WEIGHING”

DINI ARGEO
FRANCE sarl
Nogent-sur-Marne

DINI ARGEO
GMBH
Sinsheim - Germany

DINI ARGEO
UK Ltd
Taunton - United Kingdom

DINI ARGEO WEIGHING
INSTRUMENTS Ltd
Shanghai - China

DINI ARGEO
WEIGHBRIDGES
Calto (RO) – Italy



HEAD OFFICE
Via Della Fisica, 20
41042 Spezzano di Fiorano Modena - Italy



VETEK AB

HANTVERKSVÄGEN 15 - 76493 - VÄDDÖ - SWEDEN

Tel. +46176-208920, info@vetek.com, www.vetek.com

SALES AND TECHNICAL ASSISTANCE SERVICE