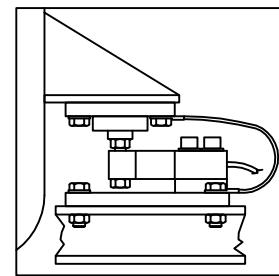
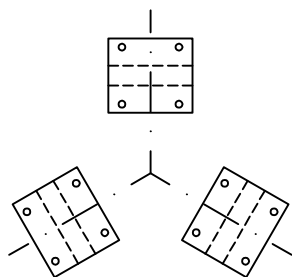


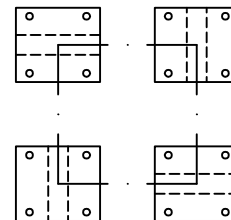
INSTALLATION EXAMPLE



EXAMPLE OF POSITIONING THE CONSTRAINTS IN A STRUCTURE WITH 3 BASES PLACED AT 120°



EXAMPLE OF POSITIONING THE CONSTRAINTS IN A STRUCTURE WITH 4 BASES




IMPORTANT NOTES FOR PROPER INSTALLATION

Kit KSBN2 and designed to allow the proper functioning of the cells and the required accuracy in weighing, without covering protection function and structure of the cell.

The installer must examine the solutions needed to protect the system against lateral forces, overturning and overhead as a function of:

- shock and vibration;
- wind pressure;
- seismic classification of the installation;
- consistency-based support.

 DINI ARGEO Bilance-Sistemi di pesatura	DATA-DATE	13/06/14	DESEGN.-DRAWED	O.R.	SCALA-SCALE	-	FOGLIO-SHEET	A4	
	DESCRIZIONE DESCRIPTION	DIMENSIONS AND POSITIONING OF KSBN2 ASSEMBLY KIT							
NOTE NOTES							CODICE CAD CAD CODE	274F72	
							CODICE CODE	-	