

Configure your PIN and receive a personalized quotation.

Contact information

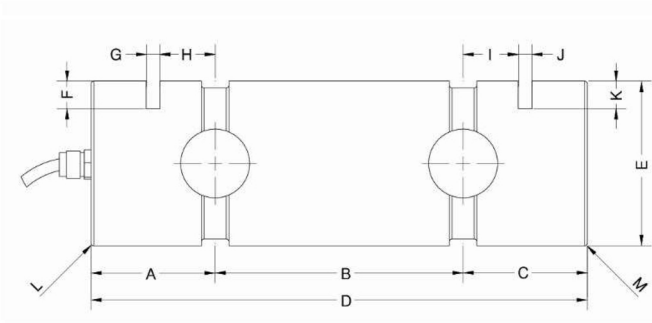
Company name *	Contact name *
COUNTRY *	Phone No. *
Email *	Web *

Nominal load *	Quantity (units) *
t	

Measures *

A	B	C	D	EØ **	F
G	H	I	J	K	M
L					

* Please, fill all the dimensions. Put a "0" if it is not needed
** Tolerance of +0.00 / -0.05 mm. Unless expressly requested



Specifications

Material	Stainless steel
----------	-----------------

Nominal sensitivity *

<input type="radio"/> 1 ± 0,25% mV/V	
<input type="radio"/> Other	mV/V (recommended from 0,5 to 1,5 mV/V)

Cable arrangement & operating temperature *

<input type="radio"/> Fixed cable -20°C to +90°C
<input type="radio"/> Connector (base male and aerial female) -20°C to +90°C
<input type="radio"/> High Temperature fixed cable -20°C to +180°C
<input type="radio"/> High Temperature connector (base male and aerial female) -20°C to +150°C

Cable length *

<input type="radio"/> 5m	
<input type="radio"/> 10m	
<input type="radio"/> 15m	
<input type="radio"/> Other	m

Cable exit position *

<input type="radio"/> Axial
<input type="radio"/> Axial Recessed
<input type="radio"/> Radial

Output *

<input type="radio"/> mV/V
<input type="radio"/> Amplified output 4/20 mA (standard: 4mA = 0 load ; 20mA = nominal load)
<input type="radio"/> Amplified output 0/10 V (standard: 0V = 0 load ; 10V = nominal load)

Ingress Protection (IP) *

<input type="radio"/> IP66 Dust-tight, protected against water jets
<input type="radio"/> IP68 Dust-tight, protected against the effects of immersion in water (standard 1m, 100h)

Redundant output *

<input type="radio"/> NO
<input type="radio"/> YES, 2 sensor system, independent of each other. Output 1 cable of 8 wires.
<input type="radio"/> YES, 2 sensor system, independent of each other. Output 2 cable of 4 wires.

Lubrication holes *

<input type="radio"/> NO	<input type="radio"/> YES (please provide a drawing)
--------------------------	--

ATEX *

<input type="radio"/> NO	<input type="radio"/> YES
--------------------------	---------------------------

Material certificate according EN10204 3.1 *

<input type="radio"/> NO	<input type="radio"/> YES
--------------------------	---------------------------

Brief application description or extra information needed

--