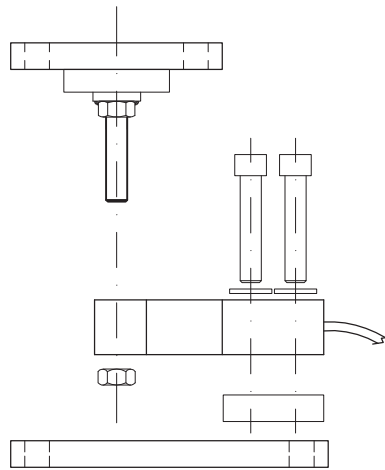
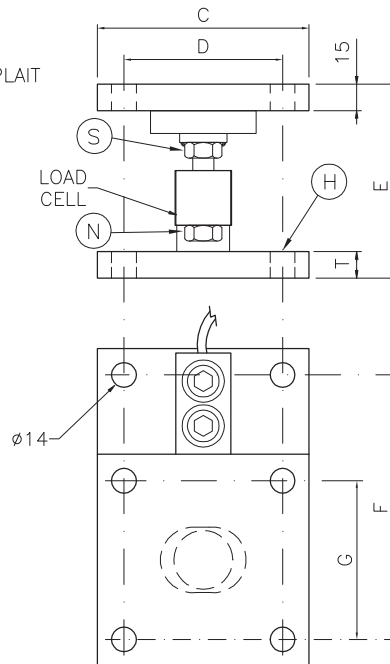
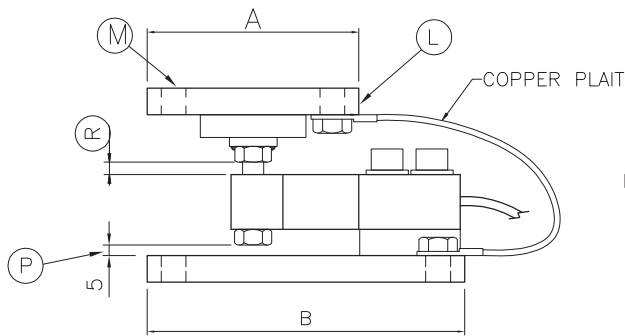


# DIMENSIONS AND POSITIONING OF THE MOUNTING KIT FOR THE KSB2 AND KSB5 SERIES

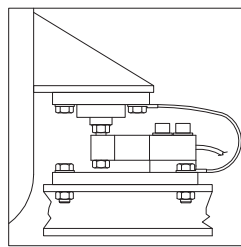
EXPLODED VIEW  
OF MOUNTING KIT



1. ASSEMBLE THE MOUNTING KIT.
  2. POSITION THE CONSTRAINT ON THE RESTING SURFACE THROUGH THE "H" FIXING HOLES.
  3. DELICATELY SET THE STRUCTURE ON THE "L" PLATE AND FIX IT USING THE "M" HOLES.
  4. TIGHTEN THE "N" NUT, UNTIL IT'S AGAINST THE LOAD CELL AND SO THAT THE "P" DISTANCE, WHICH IS FROM THE NUT TO THE LOWER PLATE, IS ABOUT 5mm.
- N.B. THE DISTANCE "R", WHICH IS FROM THE "S" NUT TO THE LOAD CELL, MUST BE AT LEAST 1mm.

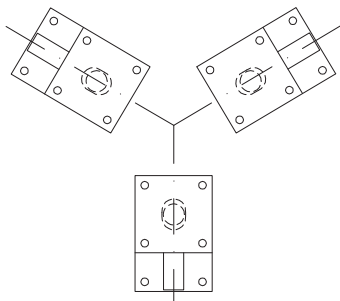


EXAMPLE OF INSTALLATION  
WITH COPPER PLAIT FOR  
SHORTCIRCUITING THE  
LOAD CELL.



CONSTRAINT MODEL	A	B	C	D	E	F	G	T
KSB2	120	180	120	90	110	150	90	15
KSB5	120	215	120	90	150	185	90	20

EXAMPLE IN WHICH THE CONSTRAINT ARE POSITIONED  
IN A STRUCTURE WITH 3 BASES SET AT 120°



EXAMPLE IN WHICH THE CONSTRAINT ARE POSITIONED  
IN A STRUCTURE WITH 4 BASES.

