

**COMPRESSION LOAD CELL  
STANDARD CAPACITIES: 2 TONS TO 20 TONS**

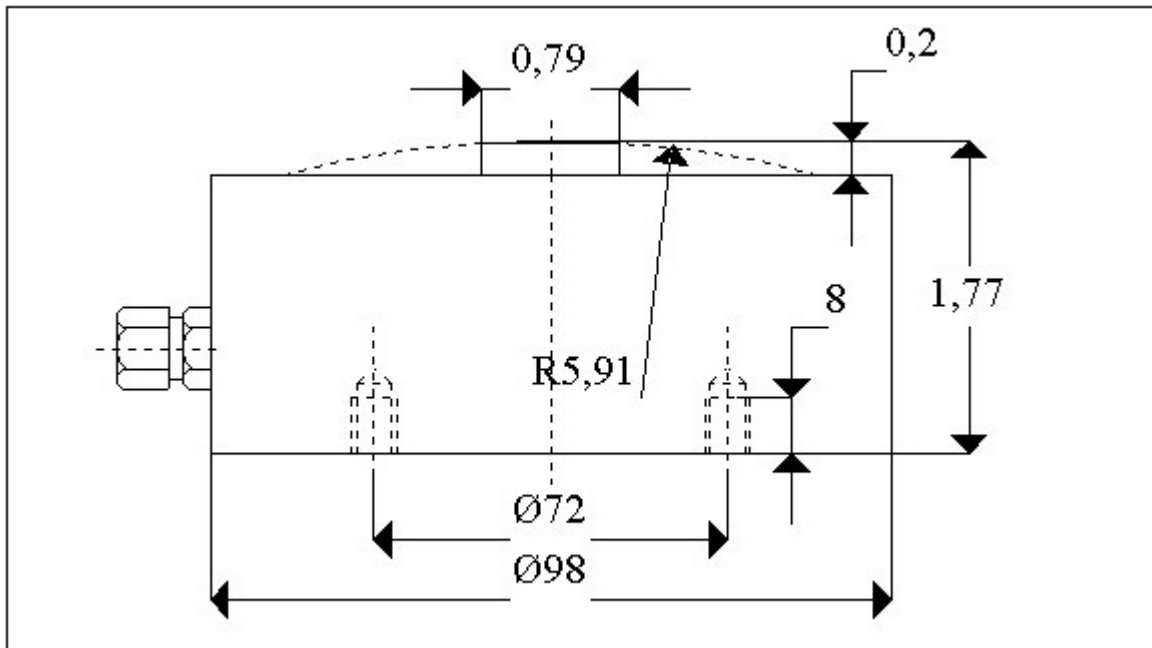
**MODEL DT 101**



**MODEL DT 101**

## **COMPLETE SERIE OF LOAD CELLS FOR SILOS, TANKS AND HOPPER SCALES**

- **SERIE DT 101 COMPRESSION LOAD CELLS FOR MANY APPLICATIONS.**
- **BETTER THAN 1500 DIVISIONS UNDER STANDARD CONDITIONS.**
- **SIMPLE TO INSTALL AND TO REPLACE BY REPAIR**
- **FULLY WELDED STAINLESS STEEL, HERMETICALLY SEALED TO IP 68.**
- **CAPACITIES: 2.000, 5.000, 10.000 AND 20.000Kg**
- **LOW COST LOAD CELL AND INSTALLATION**



## SPECIFICATIONS

	UNITS	AMOUNT
Capacities, $E_{MAX}$	T	2,5,10,20
Accuracy class	>As C1,5	>1500 DIVISIONS
Min. dead load $E_{min}$	% of $E_{MAX}$	0
Safe Load limit $E_{LIM}$	% of $E_{MAX}$	150
Linearity error	%	<+/-0,10
Hysteresis error	%	<+/-0,10
Repeatability	%	<+/-0,05
Temperature effects: zero	%/°C	<+/-0,005
Temperature effects: span	%/°C	<+/-0,005
Creep error	%	<+/-0,020
Temperature compensation	°C	-30 to +70
Sensitivity (C)	MV/V	2+/-0,25%
Nominal input voltage (max)	V dc or ac	10 (15)
Input resistance	Ohm	780+/-25
Output resistance	Ohm	700+/-5
No load out put	%	<+/-2
Insulation resistance	M ohms	>5000

## ELECTRICAL CONNECTION

CABLE	POLYURETHANE, Ø5,4 mm; 7 meter
+ EXCITATION	RED
- EXCITATION	BLUE
+ SIGNAL	GREEN
- SIGNAL	YELLOW