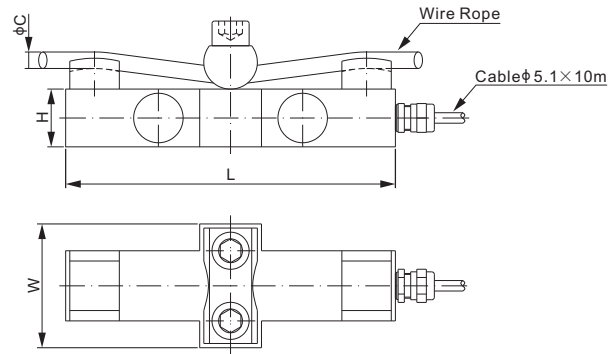
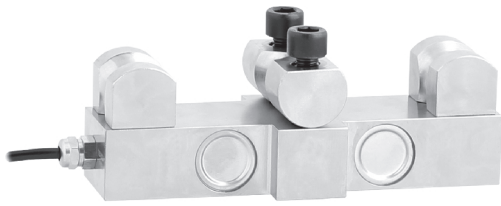


# 107CH



## Alloy Steel

FORCE MEASUREMENT



### DIMENSIONS

RATED CAPACITY	C(wire rope)	H	L	W
<b>kN/mm</b>				
10	6-14	28.0	160.0	60.0
20	10-18	28.0	160.0	60.0
50	16-26	34.0	180.0	68.0
100	24-36	40.0	200.0	80.0
200	24-36	46.0	240.0	90.0
<b>kN/inches</b> (conversion of above dimensions)				
10	0.24-0.55	1.10	6.30	2.36
20	0.39-0.71	1.10	6.30	2.36
50	0.63-1.02	1.34	7.09	2.68
100	0.94-1.42	1.57	7.87	3.15
200	0.94-1.42	1.81	9.45	3.54

### SPECIFICATIONS

<b>Full Scale Output</b>	1.0 - 1.5 mV/V	<b>Element Material</b>	Alloy Steel, Nickel Plated	
<b>Zero Balance</b>	< ± 1%	<b>Recommended Excitation</b>	10V	
<b>Non-linearity</b>	< ± 0.3%	<b>Insulation Resistance</b>	>5 [ 50V DC ] GΩ	
<b>Repeatability</b>	< ± 0.3%	<b>Compensated Temperature Range</b>	-20°C to 65°C / -4°F to 149°F	
<b>Hysteresis Error</b>	< ± 0.3%	<b>Safe Overload</b>	150% of full scale	
<b>Creep in 30 min.</b>	< ± 0.05%	<b>Seal Type / IP Rating</b>	Environmentally Sealed / IP67	
<b>Input Resistance</b>	750 Ω ± 15	<b>Cable Color Code</b>	Exc+ Red	Exc- Black
<b>Output Resistance</b>	700 Ω ± 5		Sig+ Green	Sig- White

### PART NUMBER

Rated Capacity	Part No.	Weight (kg) Approx.
10kN.....	107CH-10kN.....	2.2
20kN.....	107CH-20kN.....	2.2
50kN.....	107CH-50kN.....	3.5
100kN.....	107CH-100kN.....	5.2
200kN.....	107CH-200kN.....	8.5