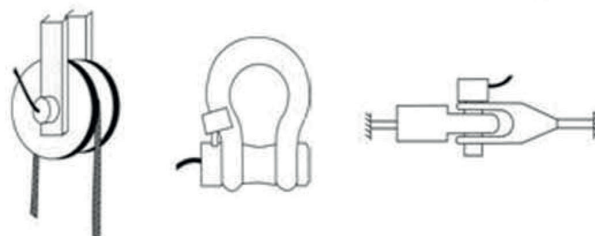
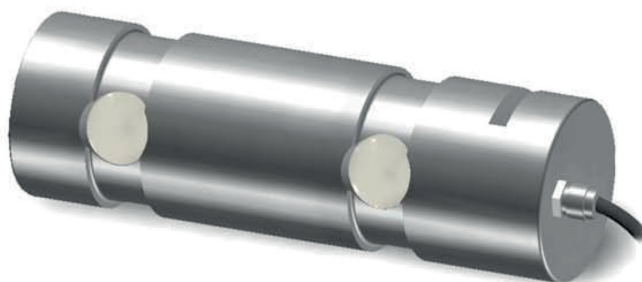


# PIN

## CUSTOM DIMENSIONING LOAD PIN

The UTILCELL's Pin load cells are specially designed for replacing and upgrading the existing axes and provide reliable measurements of loads applied on the same axis.



## BENEFITS

- Customized design according to client requirements
- 100% compatible with your existing axes. Easy to replace and install with no system modifications
- Immediate quotations with 3D design
- Fast delivery terms
- Robust construction in high strength stainless steel
- Standard protection IP 66, optionally IP 68 for highly demanding atmospheres (marine environments)
- Working temperature from -20°C to +90°C and high temperature up to +180°C
- Optionally integrated amplifier for analog output 0/4...20mA, 0...+10V



# Custom designed LOADPIN



## APPLICATIONS



- Overload protection, weighing, force monitoring, industrial safety and measurement
- Cranes, hoisting devices and lift equipment
- Load limiting in conveyor systems
- On-board weighing in trucks, trailers and mobile machinery
- Pivots and shackles
- Winches and mooring lines
- Weighing in high temperature and marine environments

